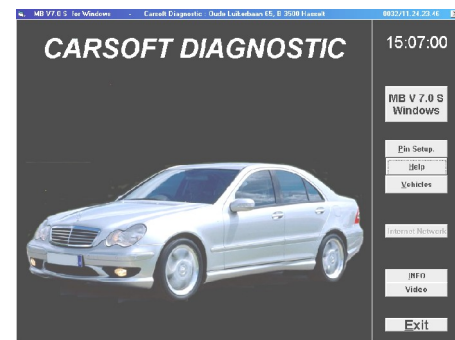


CarSoft Mercedes 7.0

**программа для специализированных
сервисных центров**

ВОЗМОЖНОСТИ ПРОГРАММЫ:



W124 (E classe):

Analogue mode – ALL control units.

Digital mode – HFM from 1995, PMS from 1992, ABS/ASR from 1995, AB from 07/1993.

W140 (S classe):

Analogue mode – ALL control units.

Digital mode – HFM, ME, LH, AB, KI, EGS, Airco, ABS/ASR.

W168 (A classe):

Digital mode – CDI, MSM, AB, KI, ASSYST, EGS, Airco, ABS/ASR, ESP.

W202 (C classe):

Analogue mode – ARA(C200D), IFI(C250D), DFI(C220D), PMS(C180-C200), HFM(C220-C230-C280) until 09/1995, ABS(C180-C200-C220-C230-C280) until 09/1995, ASR(C280) until 09/1995, IRCL(C180-C200-C220-C230-C280) until 12/1994, ATA(C180-C200-C220-C230-C280) until 12/1994, AB until 07/93

Digital mode - HFM, ME, EVE, CDI, AB, KI, ASSYST, EGS, Airco, ABS/ASR, BAS, ESP, PSE.

W208 (CLK):

Digital mode - HFM, ME, AB, KI, ASSYST, EGS, Airco, ABS/ASR, BAS, ESP, PSE, PTS fr. FACELIFT

W210 (E classe):

Digital mode - HFM, ME, EVE, CDI, AB, KI until FACELIFT, ASSYST until FACELIFT, EGS, Airco, ABS/ASR, BAS, ESP, PSE, PTS from FACELIFT.

W220 / W215 (S classe):

Digital mode - ME, CDI, ABS, KI, EGS, Airco, ASR, BAS, ESP, AIRmatic, ABC.

R129 (SL):

Analogue mode – ALL control units.

Digital mode – HFM, ME, LH, AB, KI, EGS, Airco, ABS/ASR.

R170 (SLK):

Digital mode - HFM, ME, AB, KI, ASSYST, EGS, Airco, ABS/ASR, BAS, ESP, PTS from FACELIFT.

R230 (SL): Digital mode – ME, AB, PTS.

W163 (M classe):

Digital mode - HFM, ME, CDI, KI, EGS, ABS/ASR, BAS, ESP.

G463 (G classe):

Analogue mode – ALL control units.

Digital mode - ME, CDI, HFM from 1992, LH from 1992, ABS/ASR, AB from 07/1993.